

# BIKE & WALKING TRAILS

Maps and Information available at the Sault Area Chamber of Commerce.

## *Sault Multi-Purpose Trail*

Cascade Crossings to Downtown, approximately 3 miles. Paved, level, commercial, aviation, mixed residential, shopping, restaurants, hotels, theater, airport, Project Playground, Sault Athletic Fields, Lake Superior State University. Used for walking, running, bicycles. Benches along the way.

## *"Road and Trail Bicycling Guide"*

For Chippewa, Luce and Mackinac Counties

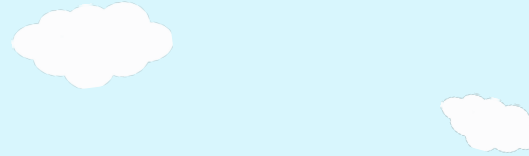
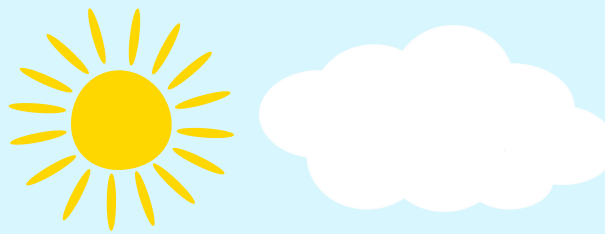
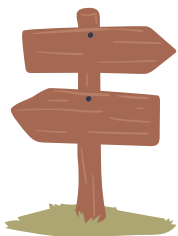
*"Trails & Bikeways Guide for Sault Ste Marie, Michigan"* includes:

*Soo Locks Park, Ashmun Bay, Rotary Park, Algonquin Pathway, Chi Mukwa Nature Trail, Sault Seal Recreation Area, Downtown Lunch Loop*

*"Trails & Bikeways Guide for Kinross Township, Michigan"* includes:

US Bicycle Route 35, Duke Lake Loop, Woodside Loop, Pine Bowl Pathway

*Trail Map for "North Country National Scenic Trail"*, footpath only. Hiawatha Shore-to-Shore Chapter, 120 miles.



*Plan your  
outdoor stay in  
the Sault!*



**CAMPGROUNDS**  
**RESORTS**  
**MARINAS**  
**BOAT LAUNCHES**  
**BIKE & WALKING TRAILS**

Members of the Sault Area Chamber of Commerce

**sault area**   
**CHAMBER OF COMMERCE**

2581 I-75 Business Spur  
Sault Ste Marie, MI 49783

906-632-3301

[office@saultstemarie.org](mailto:office@saultstemarie.org)

## CAMPGROUNDS



### AUNE-OSBORN CAMPGROUND

906-632-3268

1225 Riverside Dr, Sault Ste Marie, MI  
A municipally operated campground with 100 sites. Electric and water. Showers, restrooms, laundry and a septic dump station. Open from May to October.

### SHERMAN PARK CAMPGROUND

906-635-5075

24th Street West, Sault Ste Marie, MI  
Located on the west side of the city on the upper St. Mary's River. Rustic camping sites with beach and swimming area. Playground, horseshoe pits, boat launch. Open May 15 to October 15.

### SOO LOCKS CAMPGROUND

906-632-3191

1001 E Portage Avenue, Sault Ste Marie, MI  
Located on the St. Mary's River, only a short walk from the Soo Locks. One hundred sites with water and electric. Septic, dump station, restrooms, store and gift shop, game and recreation room. Open May 1 through October 20.

### BRIMLEY STATE PARK

906-248-3422

9200 West 6 Mile Road, Brimley, MI  
Over 200 campsites. Motor Vehicle Permit required. Only a short drive to Tahquamenon Falls, two National Fish Hatcheries, the Hiawatha National Forest, the Tower of History, the Museum Ship Valley Camp and the Soo Locks. Open April 15 to November 5.



## MARINAS &

## BOAT LAUNCHES



### CHARLES T. HARVEY MARINA

906-632-6741

2442 Riverside Dr.

Sault Ste Marie, MI 49783

31 berths & 10 transient slips.

Boat Launch

### GEORGE KEMP DOWNTOWN MARINA

\*NO BOAT LAUNCH\*

906-635-7670 OR 906-635-7680

458 E Water Street

Sault Ste Marie, MI 49783

### ASHMUN BAY PARK

West Portage Avenue

Sault Ste Marie, MI 49783

36 acre park that offers the only major boat launch into the upper St. Mary's River.

### ROTARY ISLAND PARK

East Portage Avenue

Sault Ste Marie, MI 49783

Located just east of the Sugar Island Ferry dock. View the lake carriers up close as they pass by in the St. Mary's River. Picnic tables, playground equipment, vault toilets and the ability to launch small boats only.

### JAMES GREGORY BOAT LAUNCH

1225 Riverside Dr

Sault Ste Marie, MI 49783

Two boat launch sites.



## CABINS/RESORTS



### BAY VILLAGE, INC.

906-493-5232/800-543-4743

33185 S. Water Street, Drummond Island, MI

[www.diyachthaven.com](http://www.diyachthaven.com)

### FORT DRUMMOND MARINE & RESORT

906-493-5359

36183 S. Whitney Bay Rd, Drummond Island, MI

[www.fortdrummondmarine.com](http://www.fortdrummondmarine.com)

### RIVER'S EDGE RESORT

906-647-1228

17123 S. Scenic Drive, Barbeau, MI

[riversedgeresortup@gmail.com](mailto:riversedgeresortup@gmail.com)

## CASINO RV PARKING

### KEWADIN CASINO & HOTEL

906-632-0530

2186 Shunk Road, Sault Ste Marie, MI

75 Sites

[www.kewadin.com](http://www.kewadin.com)

### BAY MILLS RESORT & CASINO

1-888-422-9645 for reservations

11386 W Lakeshore Dr, Brimley, MI

76 sites

[www.baymillscasinos.com](http://www.baymillscasinos.com)

